

**29200-29248**

**LYON OAKS DR  
WIXOM TWP, MI**



# LYON OAKS INDUSTRIAL CENTER

## PROPERTY FEATURES

- 23,104 SF Building
- Newly renovated
- Grand river frontage
- Private entry
- Easy freeway access
- signage available



# 24399-24411 MICHIGAN AVE DEARBORN MICHIGAN

## OFFERING SUMMARY

Price / SF:	\$9.50 SF (Annual)
NNN/ SF:	\$_ SF EST.
Building size:	23,104 SF
Available SF :	n/a
Lot Size :	2.07 acres
Zoning:	LT. Industrial
Year Built:	2003

## PROPERTY HIGHLIGHTS

- Located on the north side of Grand River Avenue, west of Wixom Road in Lyon Twp., Oakland County, Michigan
- Newly rennovated
- Agressive rates
- Grand River frontage with private entry and easy freeway access
- 18' ceilings
- signage available



**MANSOUR**  
COMPANIES

INVESTMENT | DEVELOPMENT | MANAGEMENT

☎ (248)882-7777

✉ info@mansourcompanies.com

🌐 www.mansourcompanies.com

📍 330 Hamilton Row, Suite 300 Birmingham, MI 48009

# INDUSTRIAL SPACE FOR LEASE: LYON OAKS INDUSTRIAL CENTER

## PROPERTY OVERVIEW

The property is located on the north side of Grand River, west of Wixom Road in Lyon Twp., Oakland County, Michigan.



**MANSOUR**  
COMPANIES

INVESTMENT | DEVELOPMENT | MANAGEMENT

☎ (248)882-7777

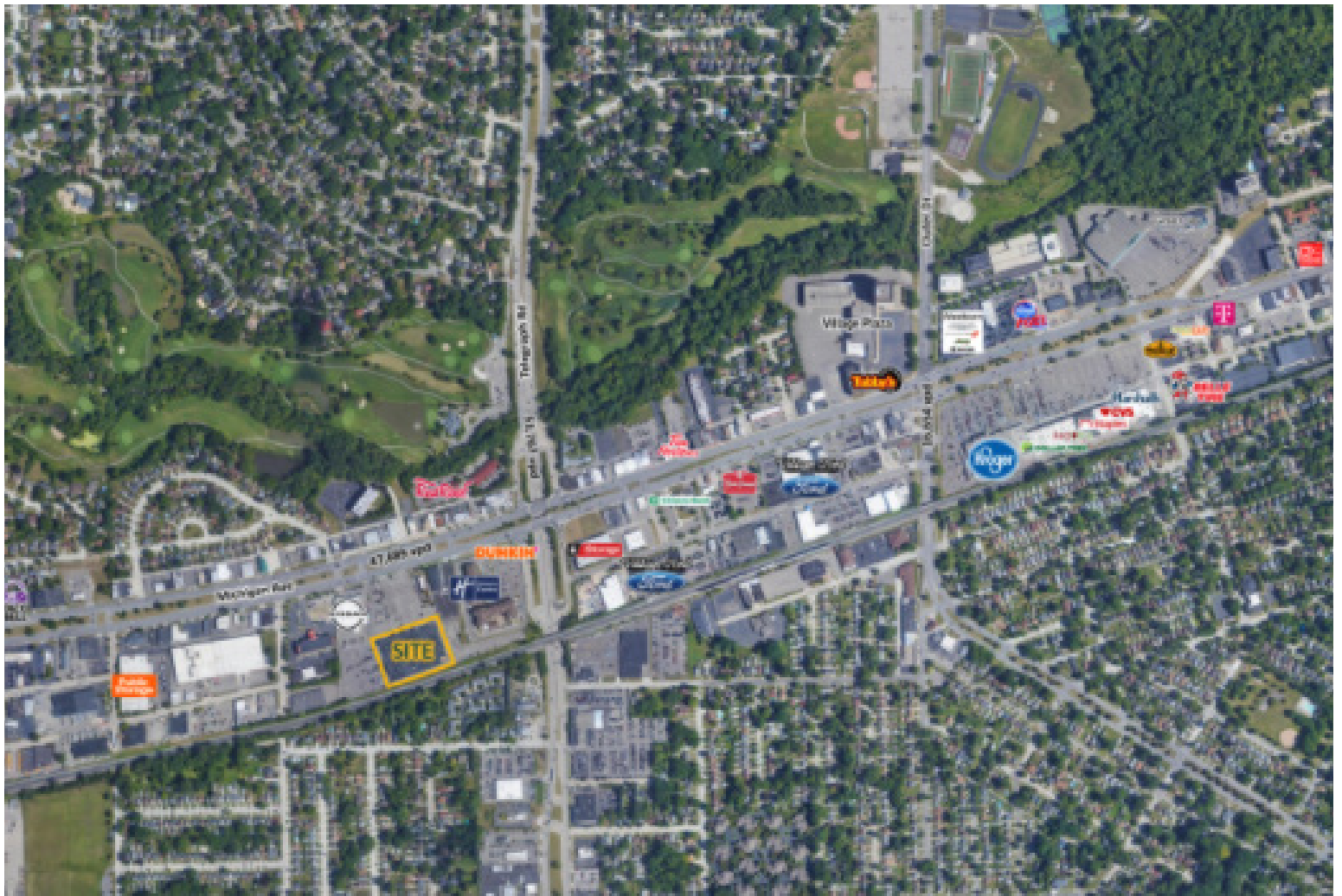
✉ [info@mansourcompanies.com](mailto:info@mansourcompanies.com)

🌐 [www.mansourcompanies.com](http://www.mansourcompanies.com)

📍 330 Hamilton Row, Suite 300 Birmingham, MI 48009

# AERIAL TENNANTS

## LYON OAKS INDUSTRIAL CENTER



**MANSOUR**  
COMPANIES

INVESTMENT | DEVELOPMENT | MANAGEMENT

☎ (248)882-7777

✉ info@mansourcompanies.com

🌐 www.mansourcompanies.com

📍 330 Hamilton Row, Suite 300 Birmingham, MI 48009

# FLOOR PLAN

# LYON OAKS INDUSTRIAL CENTER



**MANSOUR**  
— COMPANIES —

INVESTMENT | DEVELOPMENT | MANAGEMENT

☎ (248)882-7777

✉ [info@mansourcompanies.com](mailto:info@mansourcompanies.com)

🌐 [www.mansourcompanies.com](http://www.mansourcompanies.com)

📍 330 Hamilton Row, Suite 300 Birmingham, MI 48009

# SITE VIEW

# LYON OAKS INDUSTRIAL CENTER



**MANSOUR**  
— COMPANIES —

INVESTMENT | DEVELOPMENT | MANAGEMENT

☎ (248)882-7777

✉ [info@mansourcompanies.com](mailto:info@mansourcompanies.com)

🌐 [www.mansourcompanies.com](http://www.mansourcompanies.com)

📍 330 Hamilton Row, Suite 300 Birmingham, MI 48009

# DEMOGRAPHICS

## LYON OAKS INDUSTRIAL CENTER

OVERVIEW	1 mile	3 mile	5 mile
Population	1,689	109,653	273,558
Housing Units	657	47,653	118,481
Median Income	\$60,770	\$51,074	\$47,138
Females	877	56,556	141,725
Males	812	53,097	131,833

Housing	1 mile	3 mile	5 mile
Total Units	657	47,419	118,481
Vacant	8.07%	8.03%	9.27%
Occupied	88.28%	88.35%	87.34%
Owners	72.41%	78.30%	77.11%
Renters	27.59%	21.70%	22.89%

Median Income	1 mile	3 mile	5 mile
Household: (+/-)	\$60,770 \$11,348	\$51,074 \$18,377	\$47,138 \$15,959
Family (+/-)	\$28,264 \$4,330	\$24,513 \$6,283	\$22,691 \$5,723
Per Capita (+/-)	\$28,264 \$4,330	\$24,513 \$6,283	\$22,691 \$5,723

Race	1 mile	3 mile	5 mile
Asian	4.20%	1.67%	1.28%
Black	18.18%	14.88%	23.34%
Islander	0.00%	0.02%	0.02%
Native	0.36%	0.42%	0.42%
White	71.40%	79.43%	71.15%
Other	5.86%	3.58%	3.78%
Hispanic	5.80%	4.33%	4.64%
Non-Hispanic	94.20%	95.67%	95.36%

Age	1 mile	3 mile	5 mile
Under 5	10.66%	6.31%	6.47%
5-9	8.76%	6.62%	6.72%
10-14	6.87%	6.93%	7.18%
15-19	5.98%	7.28%	7.63%
20-29	14.15%	12.29%	12.35%
30-39	17.11%	12.99%	13.26%
40-54	21.31%	21.64%	21.78%
55-64	8.82%	11.70%	11.30%
65-74	3.79%	6.70%	6.32%
>=75:	2.55%	7.53%	7.00%



**MANSOUR**  
COMPANIES

INVESTMENT | DEVELOPMENT | MANAGEMENT

☎ (248)882-7777

✉ info@mansourcompanies.com

🌐 www.mansourcompanies.com

📍 330 Hamilton Row, Suite 300 Birmingham, MI 48009